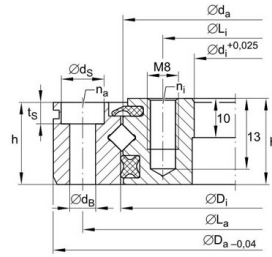
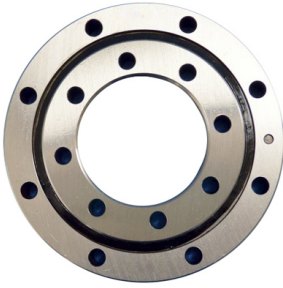


XU crossed roller slewing bearing



Main dimensions

load rating
□axial□ Basic load
rating□radial□ weight

Identification number	inner ring d mm	outer ring D mm	Roller pitch circle diameter dp mm	width B mm	$\varnothing L_a$	na	$\varnothing L_i$	ni	load rating		Basic load rating		weight Kg
									□axial□	□radial□	Cr	Cor	
									Ca	C0a	KN	KN	
XU050077	40	112	77	22	97	6- \varnothing 6.6	56	6-M8	22.4	29	14.3	14.2	1.4
XU060094	57	140	94	26	120	6- \varnothing 9	70	6-M8	32.5	37.5	20.7	18.4	2.4
XU060111	76.2	145.79	111	15.87	133.1	8- \varnothing 6.9	88.9	8- \varnothing 6.9	36	44.5	22.8	21.5	1.2
XU080120	69	170	120	30	148	6- \varnothing 9	90	6-M8	56	53	35.5	26	4
XU080149	101.6	196.85	149.6	22.22	177.8	16- \varnothing 6.9	115.8	16- \varnothing 6.9	63	66	40	32.5	3.6
XU120179	124.5	234	179	35	214	12- \varnothing 11	144.5	12- \varnothing 11	118	179	75	88	7
XU120222	140	300	222	36	270	12-M16	170	12- \varnothing 18	133	275	85	131	12
XU160260	191	329	260	46	305	20- \varnothing 14	215	20- \varnothing 14	212	350	135	173	16
XU080264	215.9	311	264	25.4	295.3	12- \varnothing 8.7	231.8	12- \varnothing 8.7	85	117	54	57	6.9
XU160405	336	474	405	46	450	30- \varnothing 14	360	30- \varnothing 14	270	550	172	270	25
XU080430	380	480	430	26	462	20- \varnothing 9	398	20-M10	110	280	70	138	12
XU300515	384	646	515	86	598	18- \varnothing 26	432	18- \varnothing 26	720	1370	455	670	115