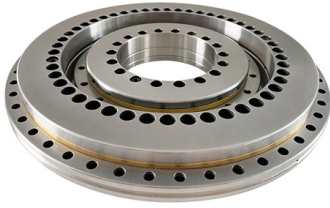
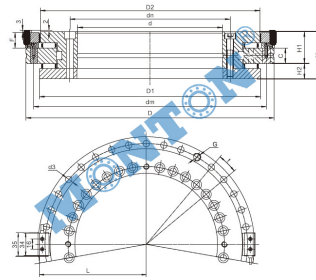


YRTM Series Series Rotary Table Bearing



YRTM L INNER RING WITH ANGLE MEASUREMENT SYSTEM



| Bearing type | Dimensions(mm) | | | | | | | | | | Inner ring(mm) | | Outer ring(mm) | | number of connecting bolts | Axial and radial runout(μm) | | Extraction thread hole | | Number of pitchesX tightening angle of pitches | | Screw tightening torque(Nm) | | Basic load rating(KN) | | | | rigidity(kNm/mrad) | | Bearing frictional torque(Nm) | Weight(kg) | | |
|--------------|----------------|-----|----|------|------|----|-------|-----|-----|-----|----------------|-----|----------------|----|----------------------------|-----------------------------|-----|------------------------|----------|--|-----|-----------------------------|-------|-----------------------|----------|-----|-----------|--------------------|-----|-------------------------------|------------|------|------|
| | d | D | H | H1 | H2 | C | D1 | D2 | dn | dm | F | L | d1 | d2 | | a | qty | qty | Standard | Strictly | G | qty | Qty×t | MA2) | axial Ca | Coa | radial Co | Cor | CkL | | | CkL1 | |
| YRTM150 | 150 | 240 | 43 | 29 | 14 | 12 | 214 | 214 | 165 | 225 | 165 | 225 | 7 | 11 | 6.2 | 34 | 7 | 33 | 2 | 3 | 1.5 | M8 | 3 | 36×10° | 14 | 112 | 630 | 56 | 170 | 83 | 14 | 10 | 6.2 |
| YRTM180 | 180 | 280 | 46 | 32 | 14 | 15 | 244.5 | 244 | 194 | 260 | 194 | 260 | 7 | 11 | 6.2 | 46 | 7 | 45 | 2 | 4 | 2 | M8 | 3 | 48×7.5° | 14 | 118 | 710 | 69.5 | 200 | 125 | 21 | 12 | 7.7 |
| YRTM200 | 200 | 300 | 47 | 32 | 15 | 15 | 271.2 | 274 | 215 | 285 | 215 | 285 | 7 | 11 | 6.2 | 46 | 7 | 45 | 2 | 4 | 2 | M8 | 3 | 48×7.5° | 14 | 120 | 765 | 81.5 | 220 | 160 | 27 | 14 | 9.7 |
| YRTM260 | 260 | 385 | 55 | 36.5 | 18.5 | 18 | 343.8 | 345 | 280 | 365 | 280 | 365 | 9.3 | 15 | 8.2 | 34 | 9.3 | 33 | 2 | 6 | 3 | M12 | 3 | 36×10° | 34 | 160 | 1060 | 93 | 290 | 320 | 53 | 20 | 18.3 |
| YRTM325 | 325 | 450 | 60 | 40 | 20 | 20 | 412.6 | 415 | 342 | 430 | 342 | 430 | 9.3 | 15 | 8.2 | 34 | 9.3 | 33 | 2 | 6 | 3 | M12 | 3 | 36×10° | 34 | 275 | 1930 | 120 | 345 | 630 | 105 | 40 | 25 |
| YRTM395 | 395 | 525 | 65 | 42.5 | 22.5 | 20 | 485.5 | 486 | 415 | 505 | 415 | 505 | 9.3 | 15 | 8.2 | 46 | 9.3 | 45 | 2 | 6 | 3 | M12 | 3 | 48×7.5° | 34 | 300 | 2280 | 186 | 655 | 1100 | 185 | 55 | 33 |
| YRTM460 | 460 | 600 | 70 | 46 | 24 | 22 | 557.7 | 560 | 482 | 580 | 482 | 580 | 9.3 | 15 | 8.2 | 46 | 9.3 | 45 | 2 | 6 | 3 | M12 | 3 | 48×7.5° | 34 | 355 | 2800 | 200 | 765 | 1700 | 285 | 70 | 45 |