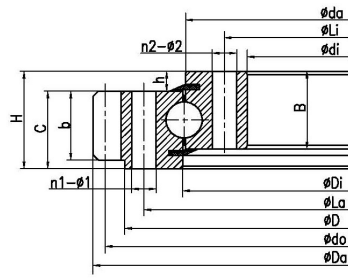


# Four-point Contact Ball Slewing Bearing With External Teeth



Bearing No.	INA No.	Rothe Erde No.	LYC No.	TG No.	Dimensions(mm)				Installation size(mm)				Structure size(mm)					Tooth parameter(mm)					Rated axial static load (KN)	Weight(kg)		
					Da	D	di	H	La	Li	n1	n2	φ1	φ2	D1	d	b	h	B	C	Di	Da			m	z
SOR10/180					254	118	25.5	220	144	15	10	φ11	φ11	242		23		25.5	25.5	181	179	2	125	250	200	27.5
SOR10/244					244	125	25	214	144.5	24	20	φ11	φ11	234		20		25	25	182	180	2	120	240	180	19.3
SOR20/222					313.5	145	50	270	175	16	16	M12	φ13.5			44	6	44	44	223	221	4.5	68	306	420	12
SOR18/368					368	161	46	305	215	8	8	φ14	φ14	326		35	5	41	41	261	259	4	90	360	315	12
SOR20/228				E.318.22.00.D.1	318	162	56	275	182	20	19	φ13	φ13	297		40	10	46	46	230	226	4.5	69	310.5	300	24.7
SOR20/228				E.318.22.00.D.1	318	162	56	275	182	20	19	φ13	φ13	297		40	10	46	46	230	227	4.5	69	310.5	300	29
SOR15/235				E.318.15.01.AA.LM	318	169	45	275	195	20	20	φ13.5	M12	300	170	30	11	34	37	236	234	3	104	312	280	9.9
SOR20/252					360	170	58	300	204	8	15	M16	φ17	330		45	12	46	50	252	252	5	70	350	480	33
SOR16/318					318.6	171	40	275	195	12	12	M12	M12			35	5	35	35	238	236	4	78	312	280	20.5
SOR15/318	VA160235N				318.6	171	40	275	195	12	12	φ13	φ13		173	35	5	35	35	236	234	4	78	312	240	20.1
SOR16/235	VA160235N				318.6	171	40	275	195	12	12	13	13			35	5	35	35	236	238	4	78	312	300	29.6
RINGGEAR415*225*65					415	225	65	360	260	10	14	M16	M16			55	15	50	55	312	308	5	81	405	650	32.2
SOR20/310					415	225	65	360	260	10	14	M16	φ17			55	10	50	55	310	310	5	81	405	550	29.6
SOR25/310Y					415	225	65	360	260	20	14	M16	M16			55	15	50	55	312	308	5	81	405	650	29
SOR20/307				E.403.22.05.AA.LM	403.5	234	55	358	259	30	27	φ13	φ13		236	45	10	45	47	308.5	305.5	5	79	395	480	31
SOR20/308				E.403.22.01.CC.LM	403.5	234	55	358	259	24	27	φ13	φ13	380	235	39	10	45	47	310	307	4.5	88	396	480	31
SOR20/310Y				E.403.22.51.CC.LM	403.5	234	55	358	259	24	27	φ13	φ13	380	235	39	9	46	47	312	309	4.5	88	396	500	31
				E.403.22.00.D1	403.5	235	55	358	259	24	27	φ13	φ13	380	279	39	8	47	47	312	309	4.5	88	396	480	31
VA250309N					408.4	235	60	359	259	24	24	φ13	φ13		237	52.5	7.5	52.5	52.5	310	308	5	80	400	450	24
SOR20/307A					408.4	235	55	355	259	24	24	φ13	φ13			50	5	50	50	308	306	5	80	400	516.5	24
SOR20/311				E.403.22.00.D.1	403.5	235	55	358	259	24	27	φ13	φ13	380		39	8	47	47	312	309	4.5	88	396	480	38
SOR25/307	VA250307N				408.4	235	55	355	259	24	24	13	13			50	5	50	50	308	310	5	80	400	670	75.8
SOR25/309	VA250309N				408.4	235	60	359	259	24	24	13	13			52.5	7.5	52.5	52.5	308	310	5	80	400	650	75.8
SOR20/308				E.403.22.00.D.1	403.5	235	55	358	259	24	27	φ13	φ13	380		39	8	47	47	310	307	4.5	88	396	560	54
SOR30/344					468	240	86	405	280	14	19	φ19	φ19			70	16	70	70	344	344	6	76	456	920	32
SOR30/344Y					468	240	86	405	280	14	19	M18	φ19			70	16	70	70	344	344	6	76	456	1100	43
SOR20/344					433.3	265	50	390	295	24	24	φ13.5	φ13.5			43	7	43	43	345.5	342.5	5	85	425	600	41
SOR20/470					470	292	50	412	316	24	24	φ13	φ13			45	5	45	45	365.5	362.5	5	92	460	420	94
SOR25/400				E.535.25.00.D.1	535	306	75	466	336	18	18	φ20	φ20	495	306	55	12	63	63	401	398	8	65	520	800	94
1100134					520.34	324.358	60.3	479.425	365.125	20	20	φ17.5	φ17.5			52.4	7.9	52.4	52.4	425	421	5.08	101	513.08	1236	57