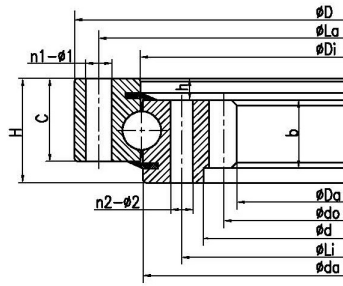
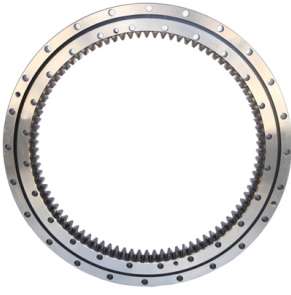


Four-point Contact Ball Slewing Bearing With Internal Teeth



Bearing No.	INA No.	Rothe Erde No.	LYC No.	TG No.	Dimensions(mm)				Installation size(mm)				Structure size(mm)						Tooth parameter(mm)		Rated axial static load (kN)	Weight(kg)					
					Da	D	di	H	La	Li	n1	n2	φ1	φ2	D1	d	b	h	B	C			Di	Da	m	z	do
SIR20/308					216	403	55	358	259	24	28	φ13	φ13	380	235	42	8	47	43	310	306	4	56	224	500	27.5	
SIR20/287					216	340	61	324	252	20	20	42071	42071			54	7	54	54	288	286	4	56	224	420	19.3	
SIR15/288	VI 160288N				216	340	39	324	252	20	20	9	9			34	5	34	34	287	289	4	56	224	350	12	
SIR15/288Y				I.340.16.00.D.1	216	340	39	324	252	20	20	φ9	φ9			34	5	34	34	288	288	4	56	224	260	12	
SIR20/418					256.95	417.9	50	390	295	18	24	M15.88	M15.88			44	6	44	44	344.48	344.42	5.08	52	264.16	630	24.7	
SIR20/387					292	457	48	432	343	18	18	42006	42006			46	2	46	46	387.5	387.5	4	75	300	560	29	
SIR10/388					294	388	35	372	326	6	6	φ8.5	M8			30	5	30	30	349	347	3	100	300	200	9.9	
SIR20/400		062.20.0400.000.11.1503			300	475	55	448	352	16	16	13.5	13.5			46	9	46	46	399	401	5	61	305	950	33	
SIR20/385Y					306	445	46	425	345	16	16	φ13	φ13			323	35	8	38	38	386	384	3	104	312	520	20.5
SIR20/385					306	445	46	425	345	16	16	φ13	φ13			323	35	8	38	38	385	385	3	104	312	570	20.1
SIR20/414Y				VSI200414N	325	486	56	460	375	24	24	φ14	M12	484	350	40	11.5	44.5	44.5	415.5	412.5	5	67	335	630	29.6	
SIR20/414A				I.486.20.00.B	325	486	56	460	375	24	24	φ14	M12			44.5	11.5	44.5	44.5	415.5	412.5	5	67	335	500	32.2	
SIR20/414					325	486	56	460	375	24	24	φ14	M12	484		44.5	11.5	44.5	44.5	415.5	412.5	5	67	335	560	29.6	
SIR20/414Y1	VSI200414N				325	486	56	460	375	24	24	φ14	M12			40	11.5	44.5	44.5	415.5	412.5	5	67	335	600	29	
SIR20/414Y2	VSI200414N				325	486	56	460	375	24	24	14	M12*20			350	40	11.5	44.5	44.5	415.5	412.5	5	67	335	560	31
SIR20/414Y3				I.486.20.00.B	325	486	56	460	375	24	24	φ14	M12			44.5	11.5	44.5	44.5	415.5	412.5	5	67	335	550	31	
SIR20/414Y4		062.20.0414.500.01.1503			326.5	486	56	460	375	24	24	13.5	M12			45.5	10.5	45.5	45.5	415.5	412.5	5	67	335	720	31	
SIR20/414Y5		062.20.0414.575.01.1403			326.5	484.5	56	460	375	24	24	13.5	M12			45.5	10.5	45.5	45.5	415.5	411	5	67	335	720	31	
SIR15/420	VI 160420N				332	486	39	462	378	16	16	14	14			34	5	34	34	419	421	4	85	340	550	24	
SIR15/420Y				I.486.16.00.D.1	332	486	39	462	378	16	16	φ14	φ14			34	5	34	34	420	420	4	85	340	380	24	
SIR20/450		062.20.0450.000.11.1503			345	531	55	500	400	16	16	15.5	15.5			46	9	46	46	449	451	5	70	350	1070	38	
SIR30/500			013.30.500.**		365	602	80	566	434	20	20	18	18			398	60	10	70	70	501.5	498.5	5	74	370	1290	75.8
SIR30/500Y			014.30.500.**		366	602	80	566	434	20	20	18	18			398	60	10	70	70	501.5	498.5	6	62	372	1290	75.8
SIR25/488				I.570.25.00.D.1	378	570	70	540	436	18	18	φ18	φ18			410	55	10	60	55	488	488	6	65	390	980	54
SIR20/465				I.535.22.00.D.3.V	380	535	50	510	420	16	16	φ13	M12φ1.25			40	5	45	40	466.5	464.5	4	96	384	1050	32	
SIR25/489	VI 250489N				384	562	55	538	440	40	40	14	14			50	5	50	50	488	490	6	66	396	1080	43	
SIR25/489Y				I.562.25.15.D.1	385	560	60	538	440	30	30	φ14	φ14			418	43	10	50	50	489	489	6	66	396	1050	41
SIR30/560			013.30.560.**		425	662	80	626	494	20	20	18	18			458	60	10	70	70	561.5	558.5	5	86	430	1440	94
SIR30/560Y			014.30.560.12		426.517	662	80	626	494	20	20	18	18			458	60	10	70	70	561.5	558.5	6	72	432	1440	94
SIR25/547				I.635.25.00.D.3.V	439.5	635	60	605	490	24	16	φ15	M16φ1.5			467	50	5	55	50	547	547	6	74	444	1190	57