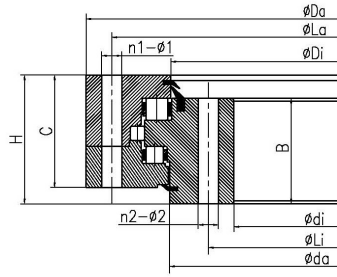
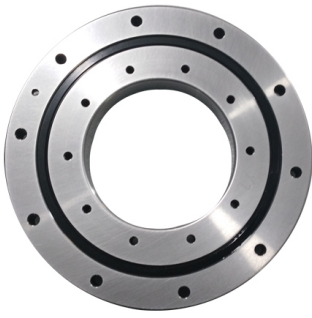


Three-row Crossed Roller Slewing Bearing Without Teeth



Bearing No.	INA No.	LYC No.	Dimensions(mm)				Installation size(mm)						Structure size(mm)						Tooth parameter(mm)					Rated axial static load (kN)	Weight(kg)	
			Da	D	di	H	La	Li	n1	n2	$\phi 1$	$\phi 2$	D1	d	b	h	B	C	Di	Da	m	z	do			x
HU25/500		130.25.500.**	634	366	148	598	402	24	24	18	18				10	116	138	526	537						2750	224
HU25/560		130.25.560.**	694	426	148	658	462	24	24	18	18				10	116	138	586	597						3080	240
HU25/630		130.25.630.**	764	496	148	728	532	28	28	18	18				10	116	138	656	667						3450	270
HU25/710		130.25.710.**	844	576	148	808	612	28	28	18	18				10	116	138	736	747						3880	300
HU30/800		130.32.800.**	964	636	182	920	680	36	36	22	22				10	142	172	830	841						5490	500
HU30/900		130.32.900.**	1064	736	182	1020	780	36	36	22	22				10	142	172	930	941						6190	600
HU28/998			1180	800	166	1114	866	24	24	M30	M30				21	136	145	962	965						7500	581
HU30/1000		130.32.1000.**	1164	836	182	1120	880	40	40	22	22				10	142	172	1030	1041						6890	680
HU30/1120		130.32.1120.**	1284	956	182	1240	1000	40	40	22	22				10	142	172	1150	1161						7680	820
HU30/1250		130.40.1250.**	1445	1055	220	1393	1107	45	45	26	26				10	170	210	1290	1300						11100	1200
HU40/1400		130.40.1400.**	1595	1205	220	1543	1257	45	45	26	26				10	170	210	1440	1450						12400	1300
HU40/1600		130.40.1600.**	1795	1405	220	1743	1457	48	48	26	26				10	170	210	1640	1650						14200	1520
HU40/1800		130.40.1800.**	1995	1605	220	1943	1657	48	48	26	26				10	170	210	1840	1850						15900	1750
HU45/2000		130.45.2000.**	2195	1816	150	2127	1885	60	60	33	33				13	117	137	2041							16900	1120
HU45/2240		130.45.2240.**	2461	2019	231	2395	2085	60	60	33	33				12	177	219	2273	2295						23100	2700
HU45/2500		130.45.2500.**	2721	2279	231	2655	2345	72	72	33	33				12	177	219	2533	2555						25800	3000
HU45/2800		130.45.2800.**	3021	2579	231	2955	2645	72	72	33	33				12	177	219	2833	2855						28800	3400
HU50/3150		130.50.3150.**	3432	2868	270	3342	2958	72	72	45	45				12	205	258	3196	3213						35900	5000
HU50/3150Y		130.50.3150.12K	3432	2868	270	3342	2958	72	72	45	45				12	220	258	3086	3103						37350	4900
HU50/3550		130.50.3550.**	3832	3268	270	3742	3358	72	72	45	45				12	202	258	3596	3613						40400	5600
HU70/3975		3-913G	4300	3650	355	4210	3750	90	90	48	48														65700	9503
HU50/4000		130.50.4000.**	4282	3718	270	4192	3908	80	80	45	45				12	202	258	4046	4063						45600	6400
HU50/4500		130.50.4500.40	4782	4218	270	4692	4308	80	80	45	45				12	202	258	4546	4563						54450	6942